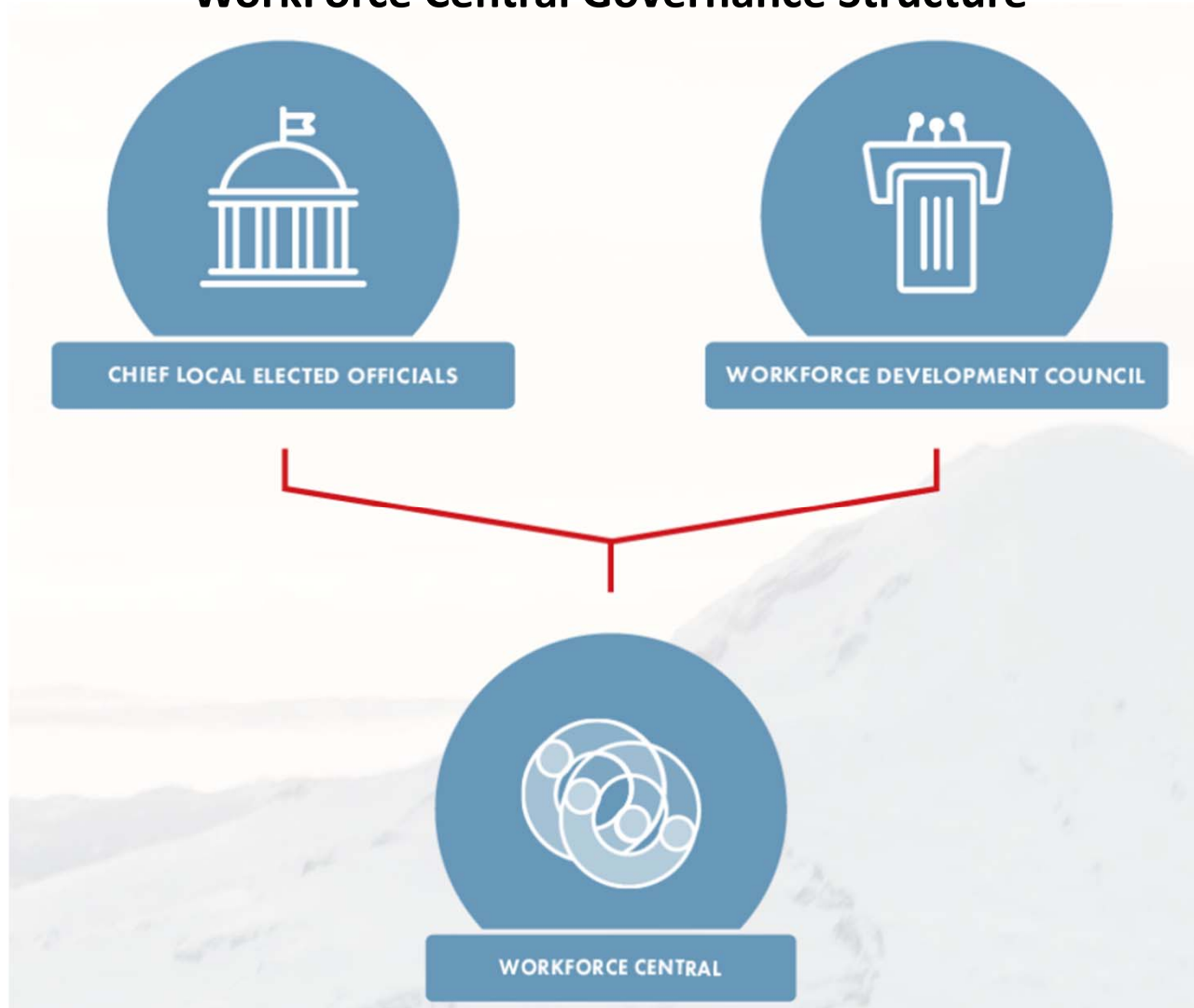




WorkForce Central Governance Structure



Bold Goal: By 2025, reduce the number of young adults and adults who are not engaged in education/training or employment in Pierce County by 50%

Bold Goal: By 2025, reduce the number of young adults and adults who are not engaged in education/training or employment in Pierce County by 50%



Services for Job Seekers

Facilitate and fund organizations to support individuals to gain employment through supportive services and work experience opportunities

Bold Goal: By 2025, reduce the number of young adults and adults who are not engaged in education/training or employment in Pierce County by 50%



Services for Job Seekers

Facilitate and fund organizations to support individuals to gain employment through supportive services and work experience opportunities

Solutions for Businesses

Provide employee recruitment, retention, training, consulting & assessment services for local employers

Bold Goal: By 2025, reduce the number of young adults and adults who are not engaged in education/training or employment in Pierce County by 50%

Services for Job Seekers

Facilitate and fund organizations to support individuals to gain employment through supportive services and work experience opportunities

Solutions for Businesses

Provide employee recruitment, retention, training, consulting & assessment services for local employers

Education and Training

Invest in, align, support, and grow education and training pathways to expand and improve the talent pipeline of disconnected young adults and adults to quality jobs

Bold Goal: By 2025, reduce the number of young adults and adults who are not engaged in education/training or employment in Pierce County by 50%



Services for Job Seekers

Facilitate and fund organizations to support individuals to gain employment through supportive services and work experience opportunities

Solutions for Businesses

Provide employee recruitment, retention, training, consulting & assessment services for local employers

Education and Training

Invest in, align, support, and grow education and training pathways to expand and improve the talent pipeline of disconnected young adults and adults to quality jobs

Systems Alignment Bring together stakeholders from across sectors and communities to build an integrated, high-impact, equitable workforce development system

WHO: Priority Populations

- Individuals who are low income and who may need help to complete an educational program or find and hold employment
- Individuals with additional barriers to employment
- Individuals with disabilities
- Individuals with basic skills deficiencies
- Veterans & eligible spouses
- Populations and communities who have been historically underserved
- Youth: 25% in School, 75% Out of School

WHERE: Priority Sectors and Employers

1. Healthcare
2. Construction
3. Military
4. Transportation, Warehousing & Logistics
5. IT / Cyber Security
6. Advanced Manufacturing

Priority Considerations:

- Living wage jobs with progression opportunities
- Locally owned, small-medium sized businesses
- Resilient jobs and skill sets
- Equity within pathways

WHAT: Good Jobs

	Job Seeker (job specific & need based)	Employer (job specific)	General Occupation, Training or Certification Track
Good Jobs	Wage > Living Wage <i>This job provides a living wage</i>	Wage > 25th Percentile (e.g. \$15.21/hr.) <i>This job pays more than a quarter of all jobs</i>	Median Occupation Wage > 50th Percentile + In-Demand**
Great Jobs	Wage > Living Wage (+15%*) + Includes Benefits <i>This job provides a living wage, benefits, and enough to save for retirement</i>	Wage > 50th Percentile (e.g. \$21.16/hr.) + Includes Benefits <i>This job pays more than most and includes benefits</i>	<i>This occupation has reasonable earning potential, and it is in- demand</i>

WorkForce Central by Numbers

Systems Alignment

- Formal Workforce System Partners: 16
- Community Engagement Taskforce Partners: 70+
- Alignment Outcomes- Common Referral System, Shared Data, Shared Standards, Shared Definitions

Services

- Individuals receiving services: 600+
- Businesses receiving services: 314

